



## Workforce: Recommendations to Advance Social Connection



Foundation for  
Social Connection  
**ACTION NETWORK**

*We envision a vibrant society where social connection is at the heart of public policy and how we live.*

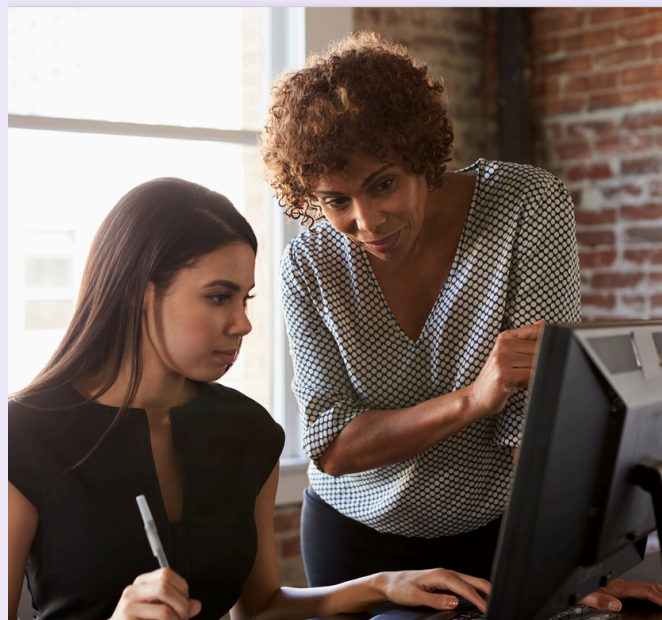
## CALL TO ACTION

Join the movement to confront the growing crisis of social disconnection. Call for bold investments and policy reforms across health, education, employment, infrastructure, arts and culture, nutrition, and research to build a more connected, resilient, and thriving society for all.



## OUR RECOMMENDATIONS

The Action Network aims to promote economic mobility and social cohesion by integrating social connection into workforce development and employment policy. It incentivizes programs that build social capital across generations and socioeconomic groups. Additionally, it emphasizes the workplace as a key setting to combat social isolation, proposing policies like tax credits, enhanced employee support programs, and data collection on social cohesion to strengthen mental health, mentorship, and community engagement.



**To address social isolation and loneliness and to encourage social connection in the workforce, policymakers should:**

**Provide federal grants for programs that build social capital and promote multi-generational social networks, through Community Development Block Grants (CDBG) among other initiatives.**



**Develop initiatives under the Workforce Innovation and Opportunity Act (WIOA) to fund programs geared toward enhancing relationships between individuals of high and low socioeconomic status.**



**Develop resources and grants through the Small Business Administration (SBA) to provide affordable employee engagement initiatives, with a focus on remote workers and gig economy employees.**



**Task the Occupational Safety and Health Administration (OSHA) with developing best practice guidelines for managing remote work, including strategies for promoting social connection and addressing mental health challenges in hybrid workplaces.**



**Require integration of social support resources into Employee Assistance Programs (EAPs) to promote peer networks and mental health support for employees.**



**Require federally funded human service programs to include social capital metrics in performance evaluations.**



## About Us

The Foundation for Social Connection Action Network (F4SCAN), formerly known as the Coalition to End Social Isolation and Loneliness (CESIL), has the mission to bring together a diverse set of national organizations, including consumer groups, health plans, healthcare providers, technology innovators, patient advocates, and more to develop and advocate for federal policy solutions to address the epidemic of social isolation and loneliness. Our efforts span a wide range of activities – developing and advocating for federal and state policy solutions, leading public awareness activations in Washington D.C. and across the nation, and incorporating the latest research into our policy platform. Our full 2025-2027 Policy Priorities can be found [here](#). Visit our website at [www.endsocialisolation.org](http://www.endsocialisolation.org)